



CONFIGURATION TRAINING

YEAR 2020

OneDealer International GmbH
www.onedealet.com

This document contains commercially sensitive and confidential information of OneDealer International GmbH and is the subject of copyright owned by or licensed to OneDealer International GmbH. Except with prior written consent of OneDealer International GmbH, the contents of this document shall not be used, copied, reproduced or disclosed other than as is strictly necessary for the direct evaluation of OneDealer International GmbH Proposal. Disclosure for such purpose shall be on a confidential basis and limited to

CONFIGURATION TRAINING MODEL TREE MANAGEMENT

Revision History

Revision Date	Revision No.	Revised by	Summary of Changes
28/09/20	1.3	Nikos Ioannou	Final document consistent with the training delivered in QR3-2020

MODEL TREE MANAGEMENT (LIGHT CONFIGURATOR)

- **SAP Business One**

Contents

1	<u>PREREQUISITE</u>	<u>4</u>
2	<u>SAP BUSINESS ONE.....</u>	<u>5</u>
3	<u>IIS</u>	<u>7</u>
4	<u>IMPORT MODEL FILE (PRICELIST) OR MANUALLY INSERT MODELS & PRICELIST</u>	<u>7</u>

1 Prerequisite

Make sure that:

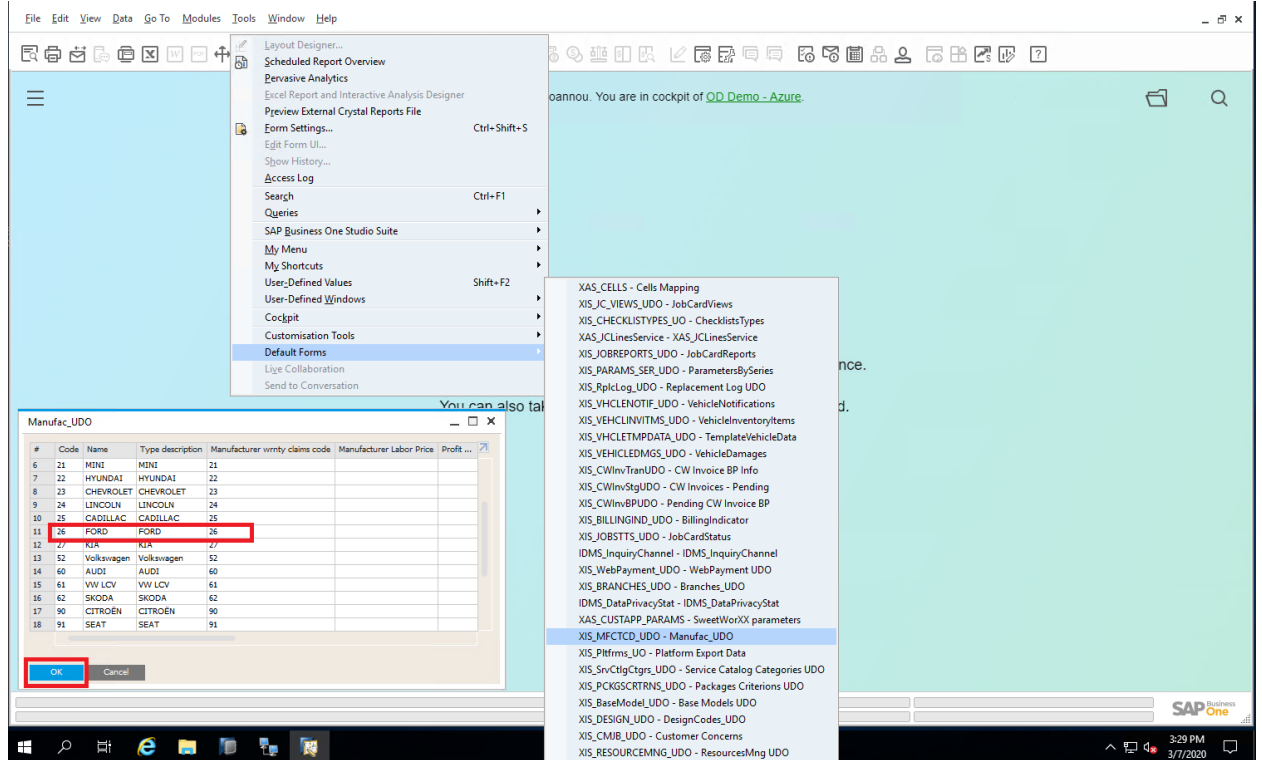
- You have the “logo” picture of the make to assign it to the configurator.
- You have the “family” picture of the vehicle to assign it to every family.

2 SAP Business One

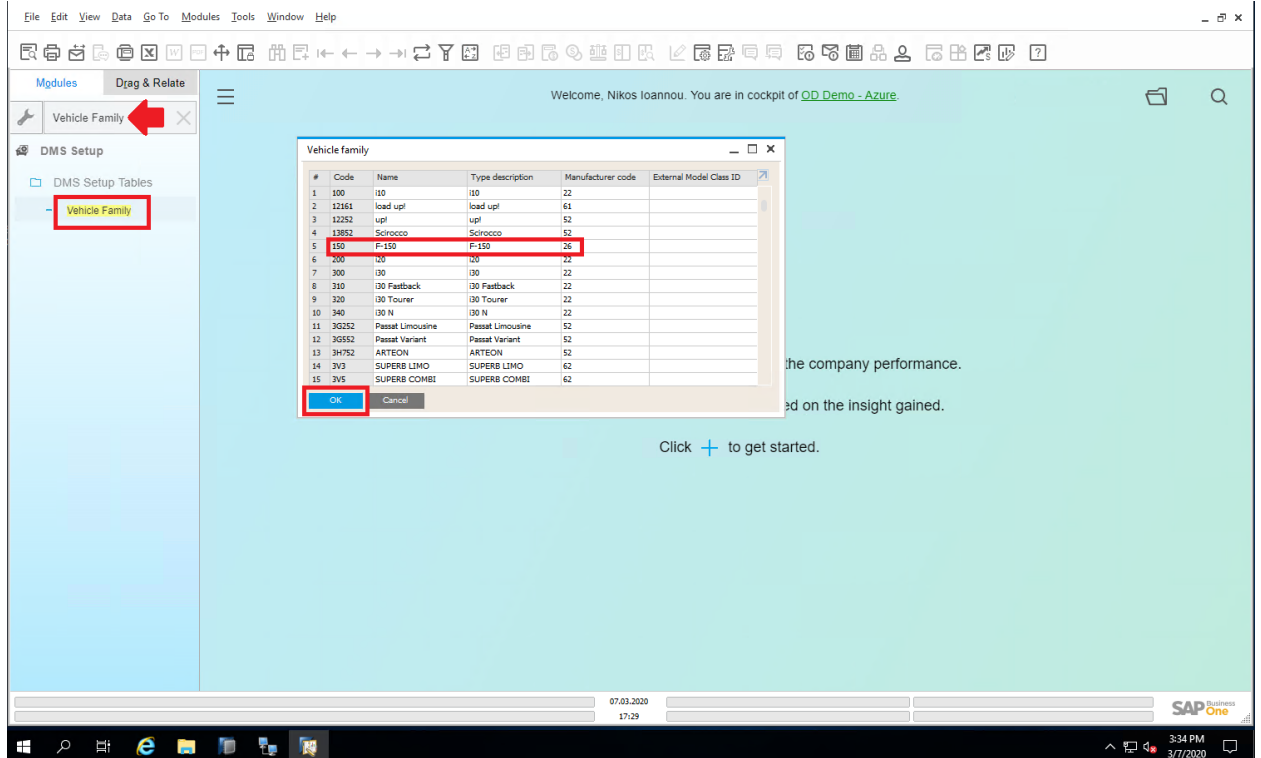
Login at SBO (with XIOMA add-on)

- Create Make (Manufacture_UDO)

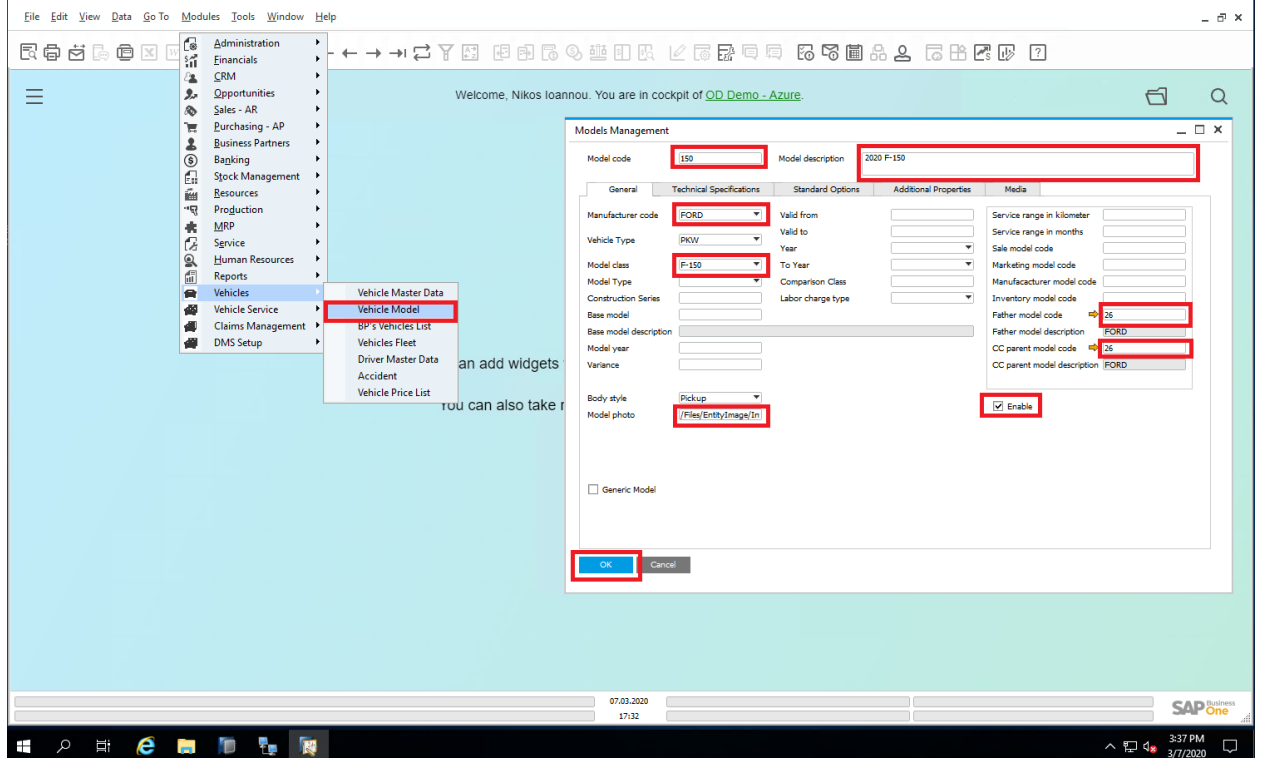
Tools – Default Forms – XISMFACTCD_UDO – Manufac_UDO



- Create Families
Module Search – Vehicle Family



- Create Families at “Vehicle Models”
Modules – Vehicle – Vehicle Model



3 IIS

- Move the pictures to the proper directory
 - Families pics
- Light Configurator configuration files at IIS
 - Theme
 - settings
 - Copy PICs Make Logo

4 Import Model file (pricelist) or manually insert Models & pricelist

- Import Pricelist (file)
OR
- Create Model (Vehicle Model)
- Create Price (Item Master Data)
- Create Colors (Item Master Data)
- Create Equipment (Item Master Data)
- Match Colors and Equipment with models by using @IDMS_CNF_MDLOPTION