



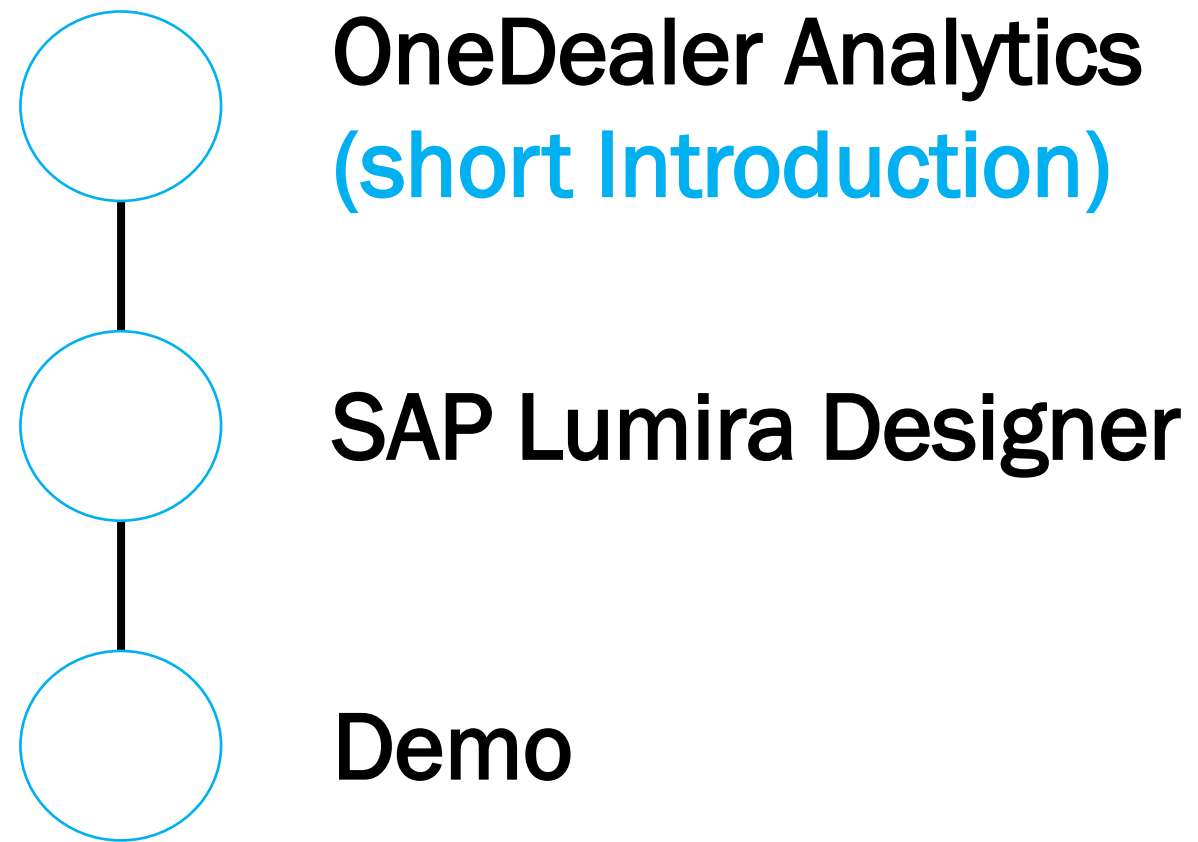
Analytics

Presenter

Dimitris Emmanoulopoulos – Data Architect



OneDealer Analytics

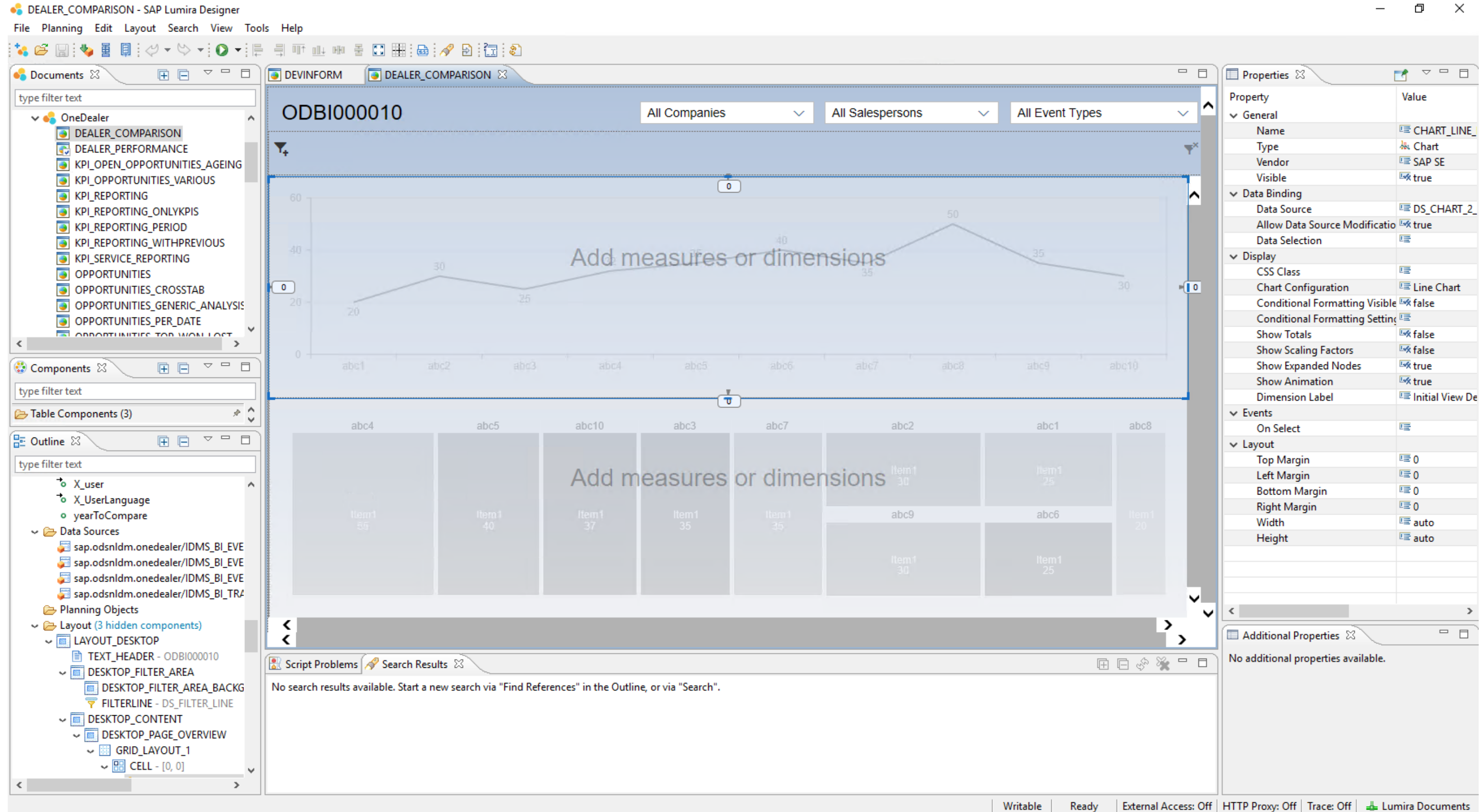


OneDealer Analytics - Introduction



- Based on the power of HANA in-memory database
- Data sources
 - HANA Calculation views
 - SQL Views (using ODBC connection)
- Dashboards are built by using SAP Lumira Designer and uploaded on SAP BI Platform
- Dashboards are embedded in OneDealer
- Dashboards can be rendered in desktop, tablet and mobile phone devices.
- Some basic Dashboard functionality includes:
 - Filtering data (from Filter line filters, Drop down lists)
 - Drill-In to OneDealer pages
 - Popup pages
 - Customization
 - Personalization
 - Conditional formatting

OneDealer Analytics – SAP Lumira Designer



The screenshot displays the SAP Lumira Designer interface for a dashboard titled 'DEALER_COMPARISON'. The main workspace shows a design for a desktop layout with a header, filter area, and content area. The header includes a title 'ODBI000010' and three dropdown filters: 'All Companies', 'All Salespersons', and 'All Event Types'. The content area is divided into two sections: a line chart and a grid layout.

Line Chart Data:

Category	Value
abc1	20
abc2	30
abc3	25
abc4	40
abc5	35
abc6	50
abc7	35
abc8	30
abc9	35
abc10	30

Grid Layout Data:

Category	Value
abc4	Item 1 55
abc5	Item 1 40
abc10	Item 1 37
abc3	Item 1 35
abc7	Item 1 35
abc2	Item 1 30
abc1	Item 1 25
abc8	Item 1 20
abc9	Item 1 30
abc6	Item 1 25
Item 1	20

The interface includes several panels: 'Documents' (showing project files), 'Components' (showing table components), 'Outline' (showing the hierarchical structure of the dashboard), 'Properties' (showing configuration for the selected chart), and 'Additional Properties' (showing no additional properties available). The status bar at the bottom indicates 'Writable', 'Ready', 'External Access: Off', 'HTTP Proxy: Off', 'Trace: Off', and 'Lumira Documents'.

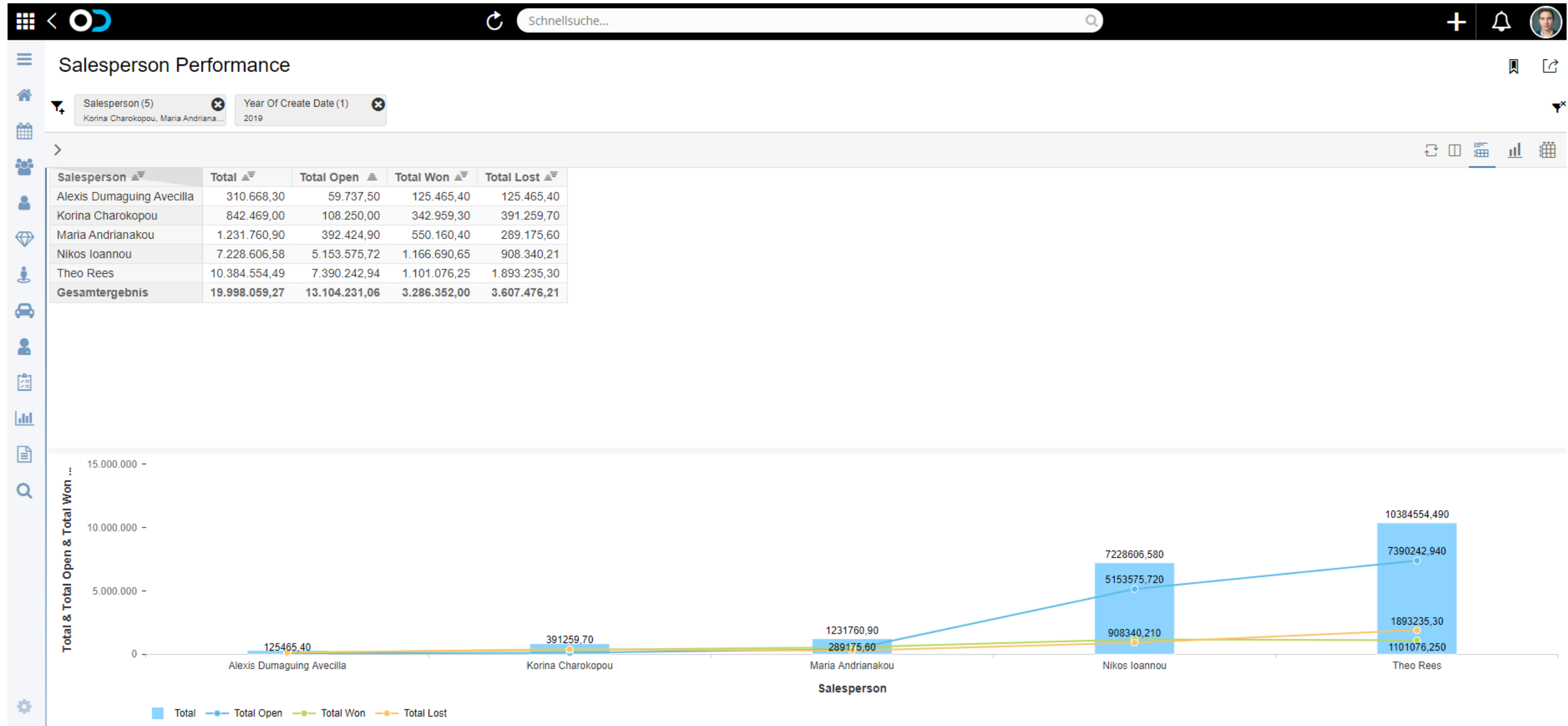
OneDealer Analytics – Embedded in OneDealer



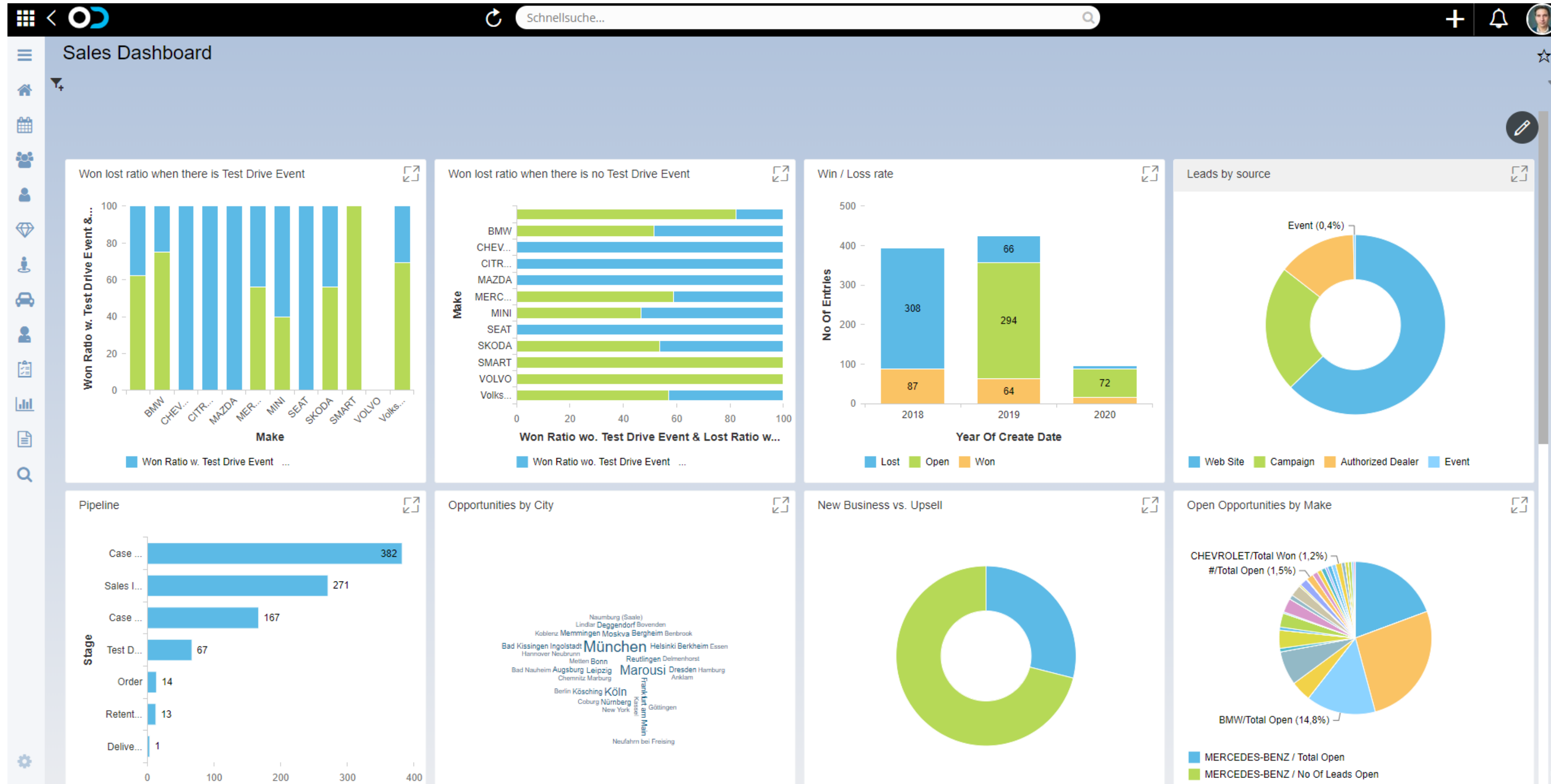
The screenshot displays the OneDealer Analytics List interface. At the top, there is a search bar labeled "Schnellsuche...". Below the search bar, the interface shows a list of 15 dashboard cards, each with a unique ID, a title, and a subtitle. The cards are arranged in a grid. On the left side, there is a vertical navigation menu with various icons. On the right side, there are controls for visibility (an eye icon) and actions (a dropdown menu labeled "Aktionen").

ID	Title	Subtitle
8D6672B0B4A3551	Opportunities per Year	Opportunities per Year
8D69354680BDD84	Opportunities per Month	Opportunities per Month
8D693547F72D4F1	Opportunities per Week	Opportunities per Week
8D693548092E66B	Opportunities per Quarter	Opportunities per Quarter
8D6EE630F02E49C	Opportunities per Date	Opportunities per Date
8D6E502B75794DC	Dealer Performance	Dealer Performance
8D695AF81BC1617	Ad-hoc Analysis	Ad-hoc Analysis
8D6F4D3E83C636A	Dealer Comparison	Dealer Comparison
8D6F97F73BA7BA6	Opportunities Top Won-Lost	Opportunities Top Won-Lost
8D6B1EA4327BCE4	Opportunities Analysis	Opportunities Analysis
8D753D9FE8A85AC	Opportunities KPI Dashboard	Opportunities KPI Dashboard
8D7613E40BC25F3	Open Opportunities Ageing	Open Opportunities Ageing
8D6968908D64A12	Opportunities Dashboard	Opportunities Dashboard
8D798089E370DE0	Salesperson Performance	Salesperson Performance
8D7980990963441	Salesperson Dashboard	Salesperson Dashboard

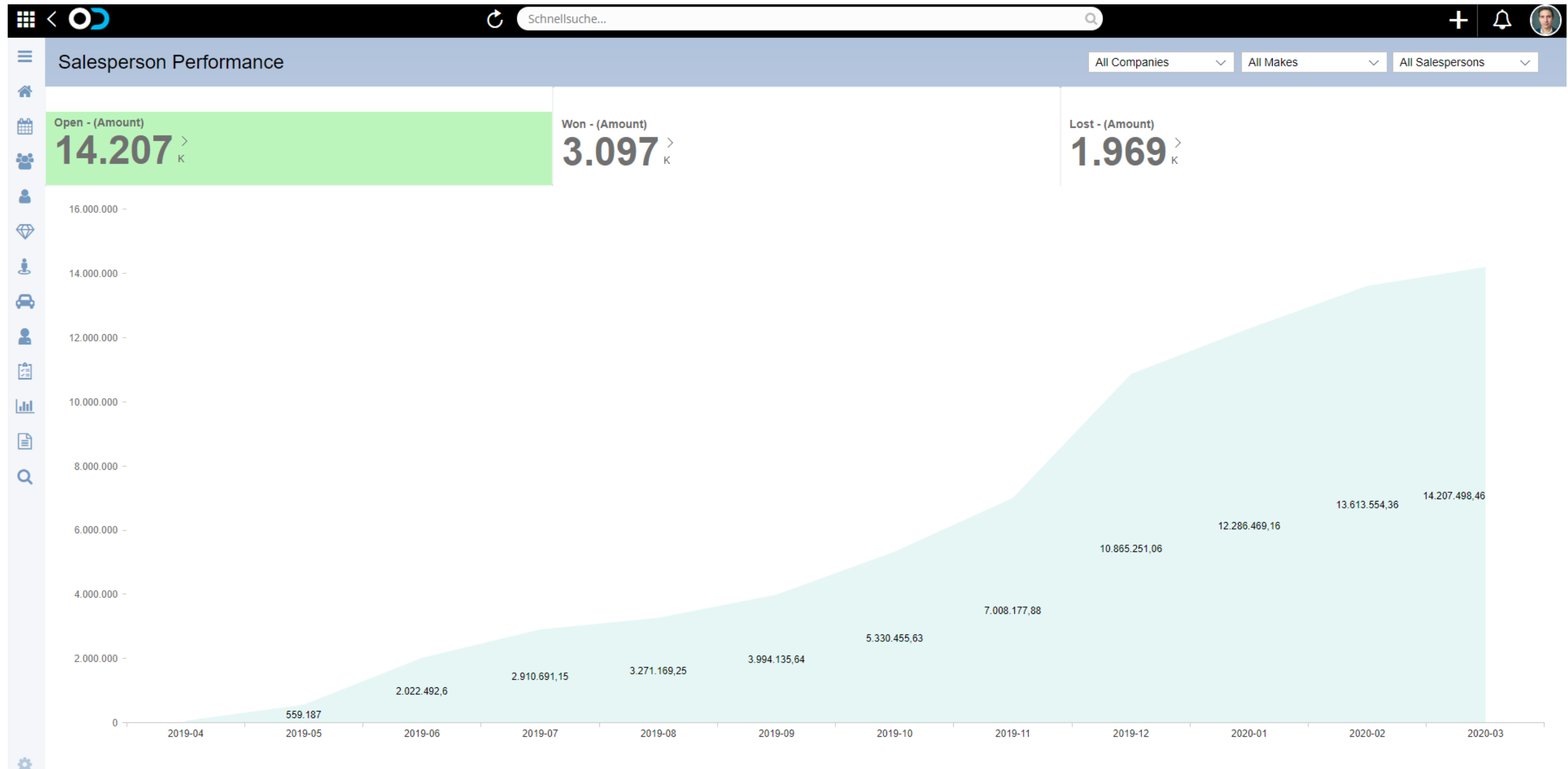
OneDealer Analytics – Sample Dashboard 1



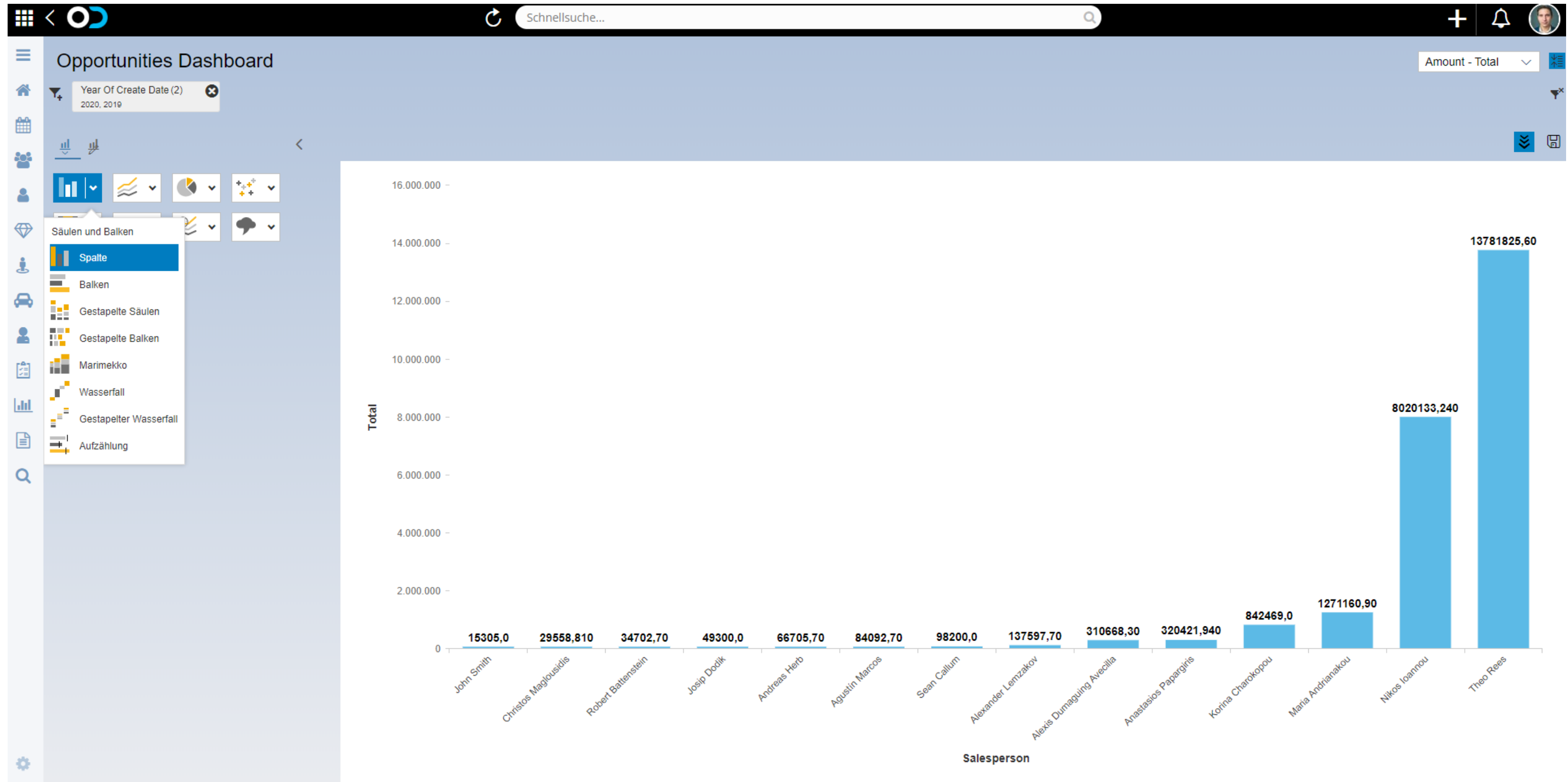
OneDealer Analytics - Sample Dashboard 2



OneDealer Analytics - Sample Dashboard 3



OneDealer Analytics - Sample Dashboard 4





OneDealer Analytics - Demo



Demo